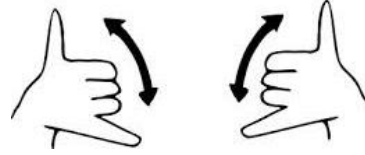




Play Group



**For Deaf and Hearing Children
and their Deaf and Hearing Families and Caregivers**

Saturdays 11:30 A.M. – 1:00 P.M.

JAN. 23; FEB. 20; MAR. 19; APR. 16; MAY 21, 2016

Bring Your Own Lunch

We Will Meet and Play at the:



Family Center
OF WASHINGTON COUNTY

383 Sherwood Drive, Montpelier Vermont

Drive to 2nd parking lot; you will see the Early Childhood Building

Call or text Chelsea Martin: (802) 595-3932 with any questions.

*Playgroups will be canceled if the facilitator feels road conditions warrant closure due to weather.
Families will be notified by email.*

Play space and activities geared towards birth to 5 year olds.

First Hour: ASL Only / Voice Off

Second Hour: ASL and Spoken English



www.fcwcvt.org / Like us on Facebook!