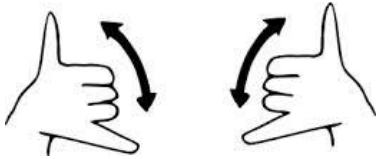


play



## **GROUP**

For Deaf and Hearing Children  
and Their Deaf and Hearing Families and Caregivers

**10:30 am - 12:00 pm**

**Sunday June 14; Saturday July 25; Saturday August 22, 2015**

We will have time for lunch before you drive home. Bring Your Own Lunch.

We Will Meet and Play at the:



**Family Center**  
OF WASHINGTON COUNTY

383 Sherwood Drive, Montpelier Vermont

Drive to 2<sup>nd</sup> parking lot; you will see the  
Early Childhood Building

Call or Text Laura: (802) 595-3896 with any questions

Play space and activities geared towards birth to 5 year olds.

**First Half: ASL Only / Voice Off**  
**Second Half: ASL and Spoken English**

