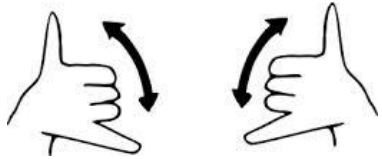


Play



GROUP

For Deaf and Hearing Children
and Their Deaf and Hearing Families and Caregivers

Sundays 10:30 A.M. – 12:30 P.M.

April 26, 2015; May 31, 2015; June 28, 2015

Bring Your Own Lunch

We Will Meet and Play at the:



Family Center
OF WASHINGTON COUNTY

383 Sherwood Drive, Montpelier Vermont

Drive to 2nd parking lot; you will see the
Early Childhood Building

Call or Text Laura: (802) 595-3896 with any questions

Play space and activities geared towards birth to 5 year olds.

First Hour: ASL Only / Voice Off

Second Hour: ASL and Spoken English

